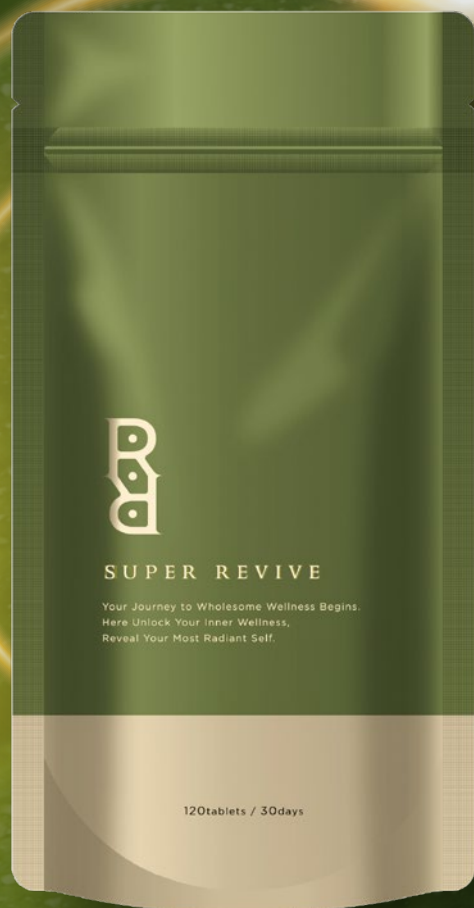


SR SUPER REVIVE

Illuminate the path to cellular rejuvenation
Redefine aging—reboot your cells, rewind the clock.

After over a decade of collaborative research and development involving industry, government, and academia, Naturally Plus proudly introduces its latest breakthrough: "Super Revive". This innovative product integrates advanced stem cell theories alongside cutting-edge technology and formulations. Central to its composition is the key ingredient "HIF1STEM™", complemented by additional components like "ginsenosides", "grape seed extract", and "red wine extract". Together, these elements activate stem cell factors, enhancing the body's inherent functions, rejuvenating vitality, and effectively reversing the aging process.



Maximises cellular functions



HIF1STEM™

Olive leaf extract



Maintains cellular activities



Ginsenosides



Grape seed extract



Red wine extract



Naturally Plus

NATURALLY PLUS HONG KONG LIMITED
2003-07A, 20/F, Tower 1, China Hong Kong City, 33 Canton Road,
Tsim Sha Tsui, Kowloon, Hong Kong www.naturally-plus.com/hk/en/

TEL

(852)3762-5005

FAX

(852)3762-5288

Promotes stem cell vitality, enhancing the body's natural functions, and fostering overall health and longevity for everyone

Main ingredient

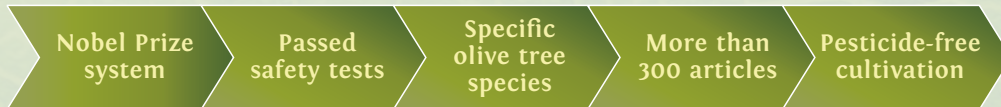
Olive leaf extract



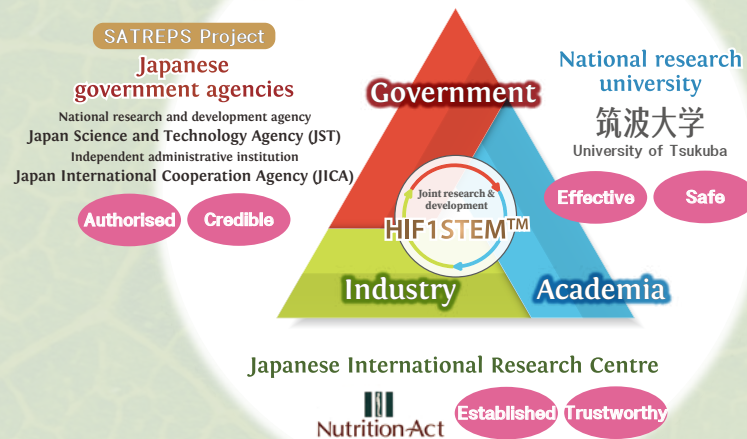
Species native to North Africa

HIF1STEM™

By fostering healthy stem cell competition, this product stimulates the generation of renewed cells and empowering your body's innate defense to heal. Additionally, it has the potential to fortify the skin, imparting a vibrant glow, and plays a pivotal role in addressing blood disorders and promoting skin health.



Over a decade of collaborative research and development between industry-academia-government in international research projects



★ SATREPS (Science and Technology Research Partnership for Sustainable Development) A program to promote international joint research between Japan and developing countries to solve global problems.

Supporting ingredient

Ginsenoside



\ Removes degraded protein /

Hailed as the 'King of all herbs,' ginseng has been extensively researched by scientists, particularly focusing on its potent and distinctive active component known as 'ginsenosides'. This group of saponins comprises nearly dozens of distinct compounds, each offering its own array of health benefits.

- Regulates autophagy
- Contains a variety of ginsenosides
- GMP-ISO quality assurance
- Halal / Kosher certified

Supporting ingredient



Grape seed extract

\ Eliminates "zombie cells" /

Grapes are rich in bioactive ingredients, and are known as "beauty food". A regular, long-term daily intake of grapes can be beneficial to your health.

- Manufactured in France
- High concentration of proanthocyanidins
- GMP-ISO quality assurance
- Halal / Kosher certified

Supporting ingredient

Red wine extract



\ Discharges degraded protein & cells /

Wine, enriched with polyphenols like resveratrol and anthocyanins, is recognized for its potential health-promoting properties. These compounds have garnered significant attention in various studies for their positive impact on health.

- Improves autophagy
- Protective benefits
- GMP-ISO quality assurance
- 2 major manufacturing patents